



WDF-05™ FOR THE PERFECT JOINT

Very fast, blue, thixotropic PVC cement for joining (flexible) hoses, pipes, sleeves and fittings.

- For pressure and drainage systems
- Ideally suited for applications in damp conditions, swimming pools and whirlpools
- Suitable for flexible hoses and hard PVC
- For interference fits and loose fits (gap-filling)
- Tolerances: press fit max. 0.2 mm/diametrical clearance max. 0.8 mm (flexible hoses max. 0.3 mm)
- Suitable for diameters up to 160 mm



WRAS **CE**

Griffon.
Committed to professionals.

Part nr. **0149052** WDF-05 250 ml
Part nr. **0149053** WDF-05 500 ml



Very fast, blue, thixotropic PVC adhesive

DIRECTIONS FOR USE



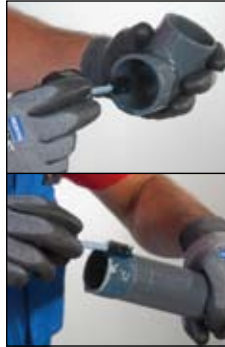
STEP 1

Cut pipes square, remove burrs and bevel edges.



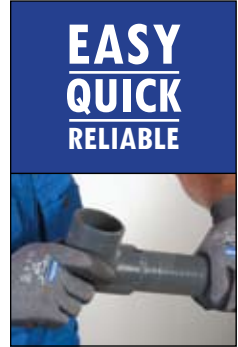
STEP 2

Clean surfaces to be joined with Griffon Cleaner



STEP 3

Apply adhesive quickly and evenly ALL-ROUND (4-6x) on both surfaces (pipe thick, socket thin).



**EASY
QUICK
RELIABLE**

STEP 4

Join parts immediately. Remove excess adhesive. Do not submit joint to load for first 10 minutes.

UNIQUE PACKAGING

QUICK-QUARTER TURN-RELEASE CAP



ALWAYS EASY TO OPEN AND CLOSE, EVEN WITH CEMENT RESIDUES

ERGONOMIC CAP WITH COMFORTABLE GRIP



EVEN DISTRIBUTION OF CEMENT

WILL NOT RUST OR DENT

DURABLE

BRUSH INTEGRATED IN CAP

EASY AND FAST APPLICATION OF CEMENT

CURE TIMES*

Ø	16 - 50 mm			63 - 110 mm			125 - 160 mm		
	5 bar	10 bar	16 bar	5 bar	10 bar	16 bar	5 bar	10 bar	16 bar
5°C-15°C	30 min	1 hour	4 hours	1 hour	2 hours	8 hours	4 hours	16 hours	32 hours
>15°C	15 min	30 min	2 hours	30 min	1 hour	4 hours	2 hours	8 hours	16 hours

* Curing times may vary depending on e.g. surface, product quantity used, humidity level and ambient temperature.