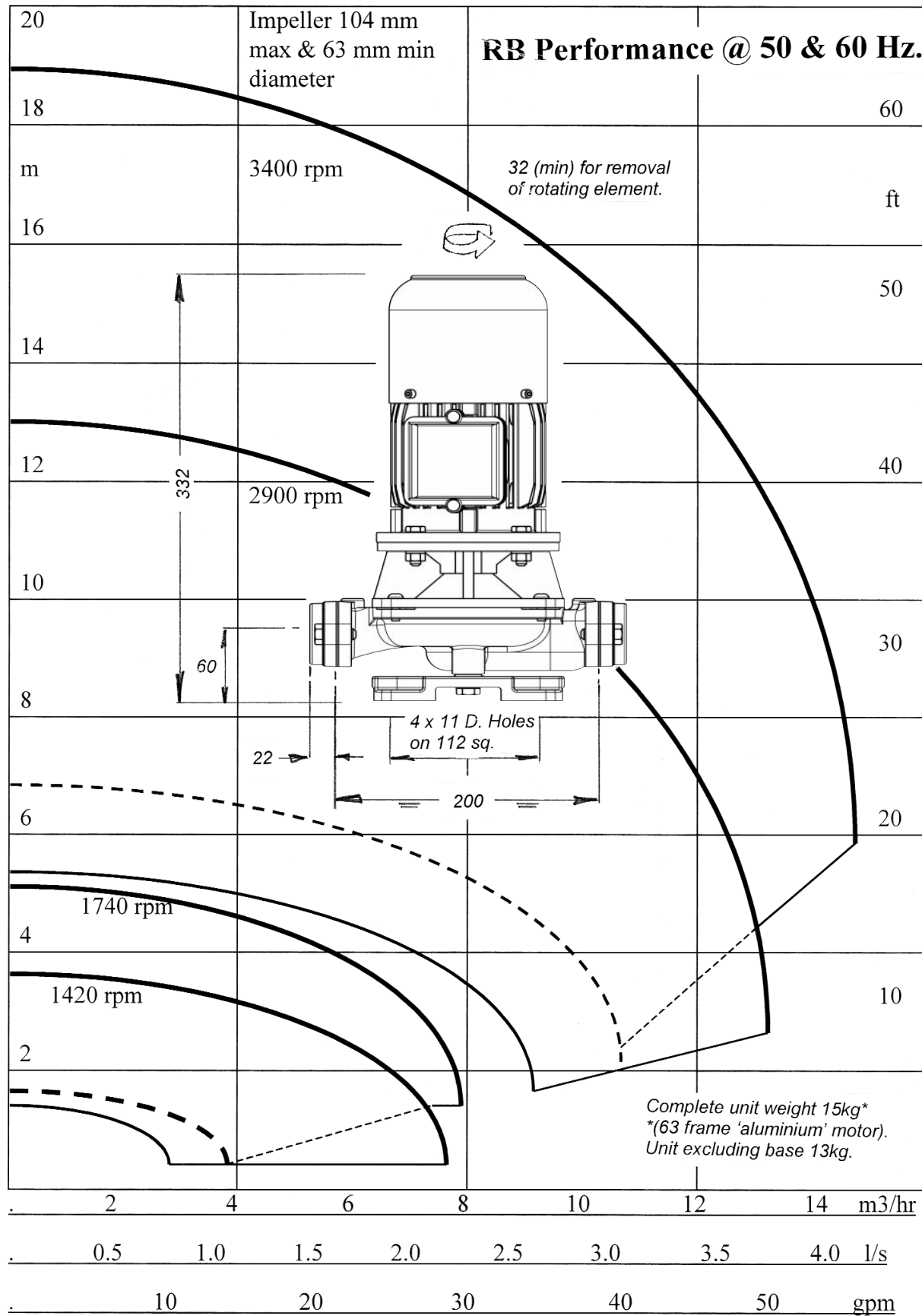


PRIMARY SELECTION CHART -
Dimensions & weight



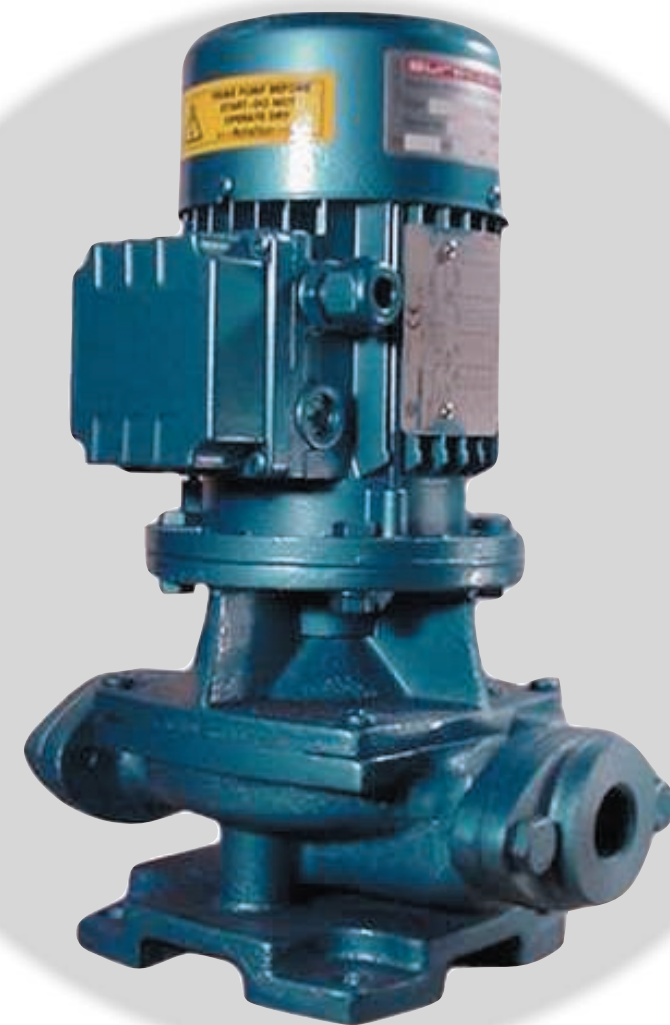
Performance with 1-1/4" connections, handling water at sea level, from a nominal flooded suction at ambient temperature

Surecast retain the right to modify details without notice at any time
View information on web @ www.modernpump.com

SURECAST (DEVIZES) LTD
ROUNDWAY MILL, LONDON RD
DEVIZES, WILTSHIRE - SN10 2EA
TEL:(0)1380 723402 FAX:(0)1380 729063
EMAIL: SALES@SURECAST.CO.UK WWW.SURECAST.CO.UK
COMPANY NO: 888549

SURECAST
PRACTICAL MANUFACTURING SOLUTIONS

RB Range
British - Metric



IN-LINE, CLOSE COUPLED, COMMERCIAL PUMPS.

SURECAST/RB/01-05

RB Range - Your rational choice

The RB pump is based on a single casing size, to which a variety of drivers can be fitted, to produce a quiet running, long life, centrifugal pump.

Its uses are many and various, including heating and air conditioning systems, diesel engine jacket water heating, compressor cooling, secondary hot water duties, fuel transfer, ornamental fountain and pond circulation

ECONOMIES IN USE

In-line design, makes for cost savings in installation.

EASE OF MAINTENANCE

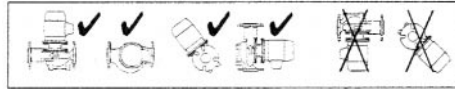
Standard metric '63 frame' flange and shaft motors, and mechanical seal allows easy replacement world wide.

OPTIONS

Changes in construction, materials, drivers, seals and mountings are available.

MOUNTING

Either of these to suit installation.



TECHNICAL DATA

Application:	Movement of clean, non-aggressive liquids.
Standard:	Conforms to 'CE' requirements.
Operating range:	10 bar maximum system pressure.
Operating range:	-10 TO 120°C, liquid temperature.
Operating range:	40°C ambient temperature.
Flanges:	Two bolt fixing, oval flanges. Supplied with counter flanges to suit BSP or NPT pipe thread.

MATERIALS

Casing, cover and impeller:	Bronze to BS1400 LG2.
Stub shaft:	Stainless steel to BS970 S431.
Casing sealing ring:	EPDM (Ethylene-propylene) rubber.
Flange gaskets:	"Asbestos free" Fibre to BS7531 Grade 'Y'.
Base:	Cast iron to BS EN1561.

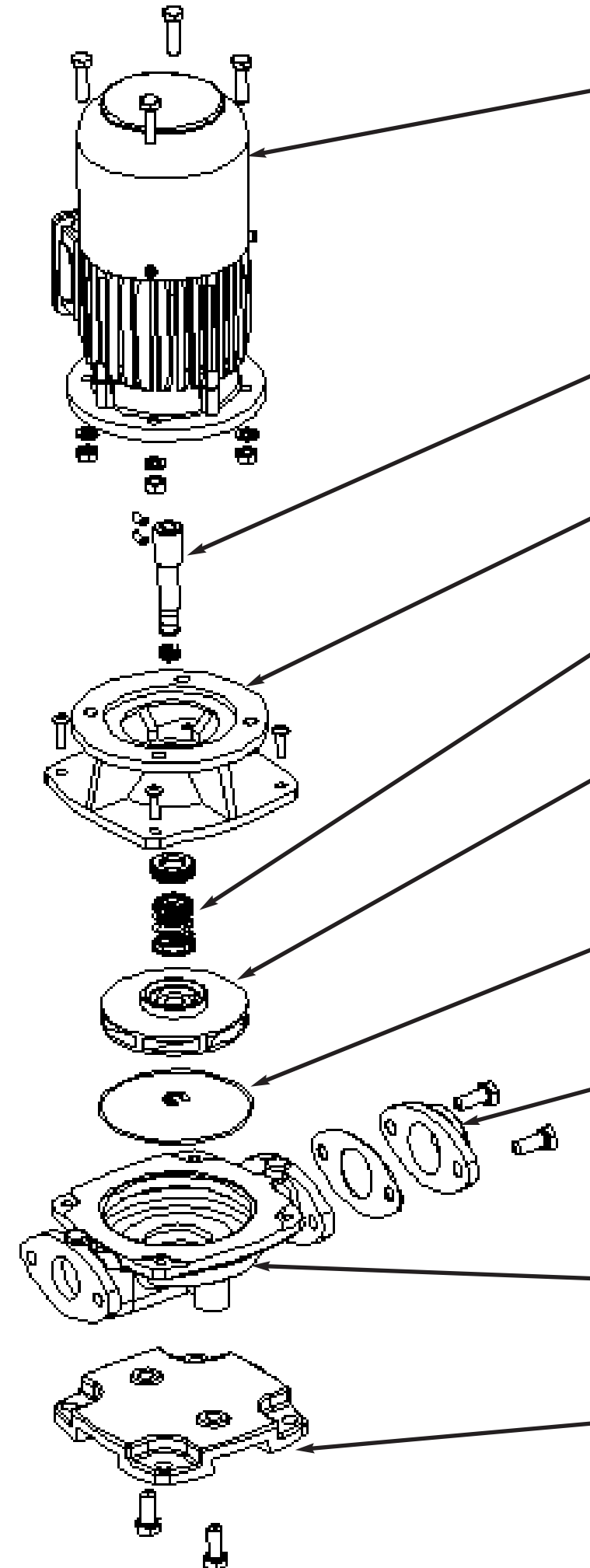
MOTOR

Dimensions and performance:	BS4999 & 5000. DIN 42673 & 42677. IEC 34 & 72.
Insulation:	Class 'F'.
Protection:	IP55.
Cooling:	IC411 - TEFV (totally enclosed fan ventilated).
Rotation:	Anti-clockwise - viewed on motor non drive end.

SPARES

Motor:	Quote frame reference, kW rating, speed, and electrical supply detail.
Shaft Seal:	Crane type 2, or equal, Carbon / ceramic / EPDM.
Nuts/Bolts/Washers/Studs/keys:	Metric standard (plated or stainless steel).

RB PUMPS



MOTORS

- To British Metric and IEC Standards
- Totally enclosed fan ventilated
- Protected against drips and dust penetration

HEAD

- Single section consisting of motor, stub shaft, seal, impeller, housing and sealing ring for ease of maintenance

STUB SHAFT

- Stainless steel composition
- Force fed, seal cooling, internally
- Alternative for independent cooling from external source

SEAL HOUSING

- Accepts British Metric and IEC frame size motors
- Force fed, seal cooling internally
- Alternative for independent cooling from external source

SEAL

- Type 2 or equivalent carbon face/ceramic seat

IMPELLER

- Advanced hydraulic design with double curvature blades for high efficiency/low NPSH requirement

CASING SEALING RING

- EDPM Rubber 'O' Ring

COUNTERFLANGES

- 2 Bolt fixing 'OVAL' Screwed companion flange
- $3/4$, 1 or $1\frac{1}{4}$ " BSP (Normal) parallel internal thread - alternative thread forms available
- Asbestos free flange gasket

casing

- Advanced watercourse design to minimise turbulence and NPSH problems.
- $1/8$ " Pressure tapings available

BASE PLATE

- Allows for simple bolting-down of pump for the fitting of vibration isolators